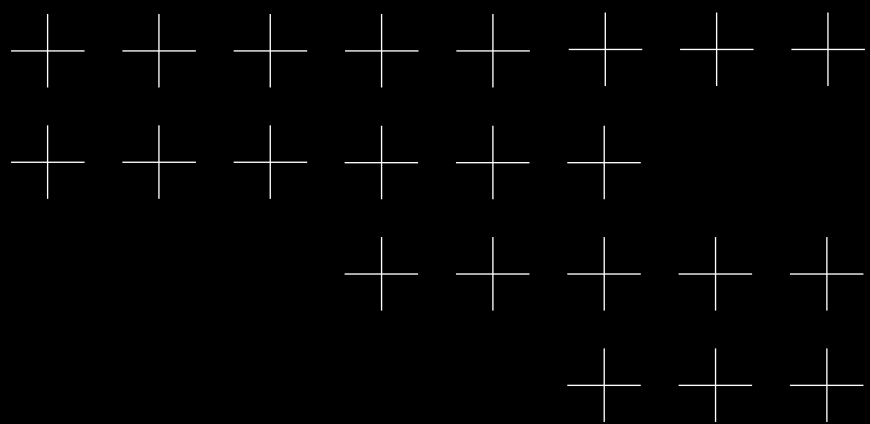


Come inside your smart BTicino home.



MY HOME
bticino

BUILD ON IT

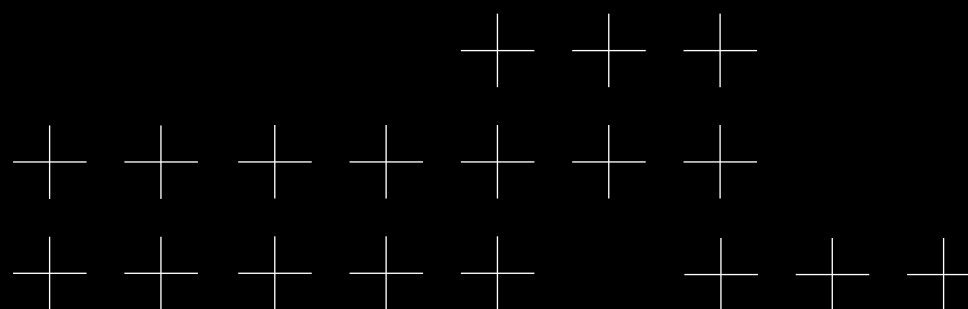


My Home Automation **1**

The applications **2**

The lines **3**

The contacts **4**



1

My Home Automation



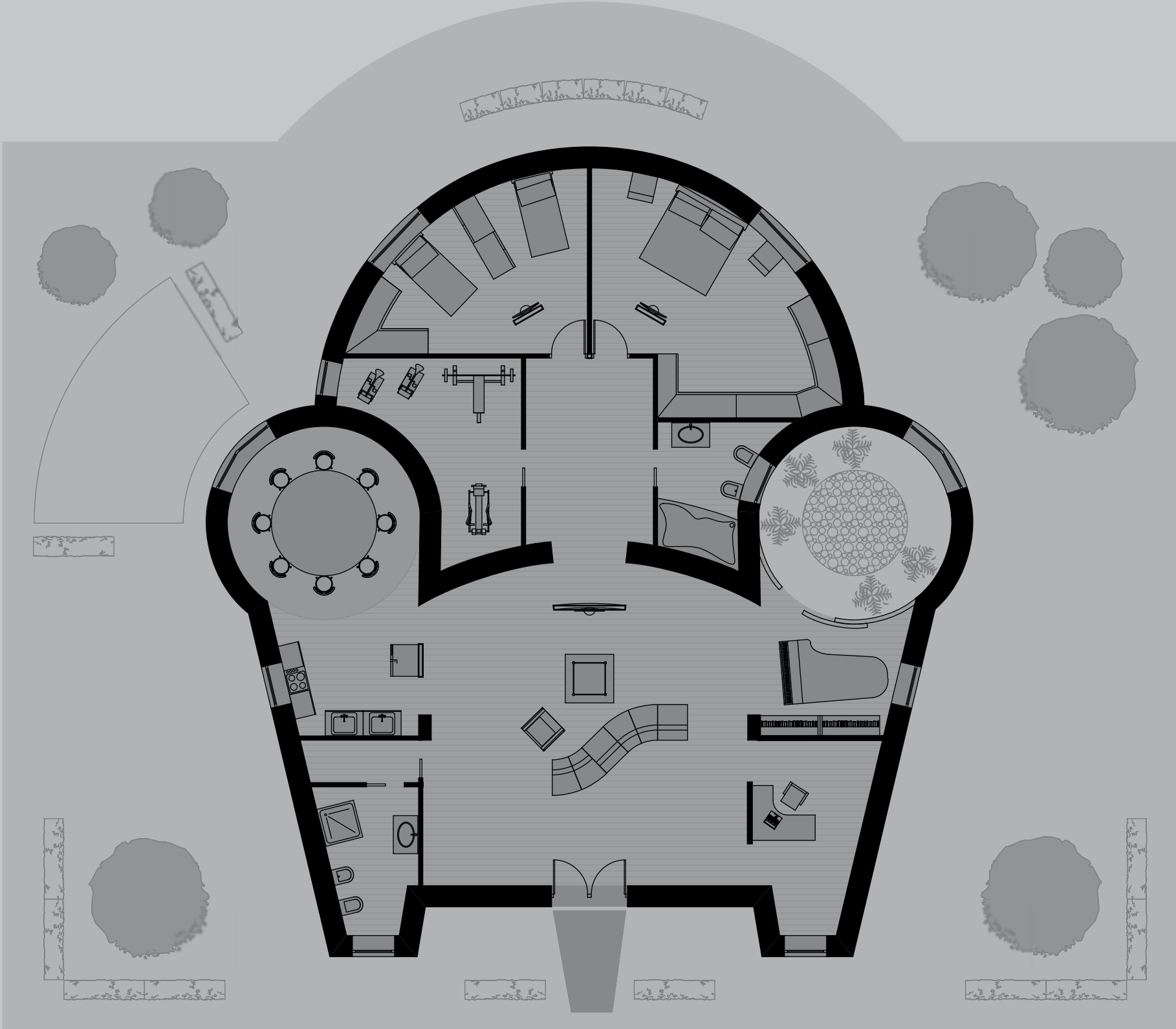
BTicino My Home Automation, a fundamental choice.

Selecting My Home Automation by BTicino, a leader in Italy and the world, means equipping your home with something special and unique, which can really look after everyone living in it. It means selecting a modular and flexible system which fulfils all the home's main systems needs, using modern and advanced technical solutions. It means selecting a practical and versatile integrated home automation system for your home, with stylish design which offers intelligent solutions in terms of comfort, safety, energy saving and efficiency, multimediality and remote control.

Also, thanks to its modularity, you can access different levels of operation, while still being able to modify the system later, as needs arise.

Home automation

The science which deals with the application of informatics and electronics to the home. The term "home automation" refers to the world of "Domotics". This term derives from the French neologism "domotique", which means "home automation".



Comfort

My Home improves and simplifies the quality of home life, helping to create the ideal atmosphere for every moment of the day. It automates the blinds and door locks, centralises light switching, plays sound and music in the home, adjusts the temperature, waters the garden and activates other automatic devices.

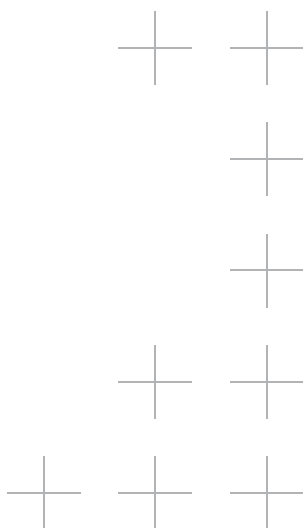
The main functions available:

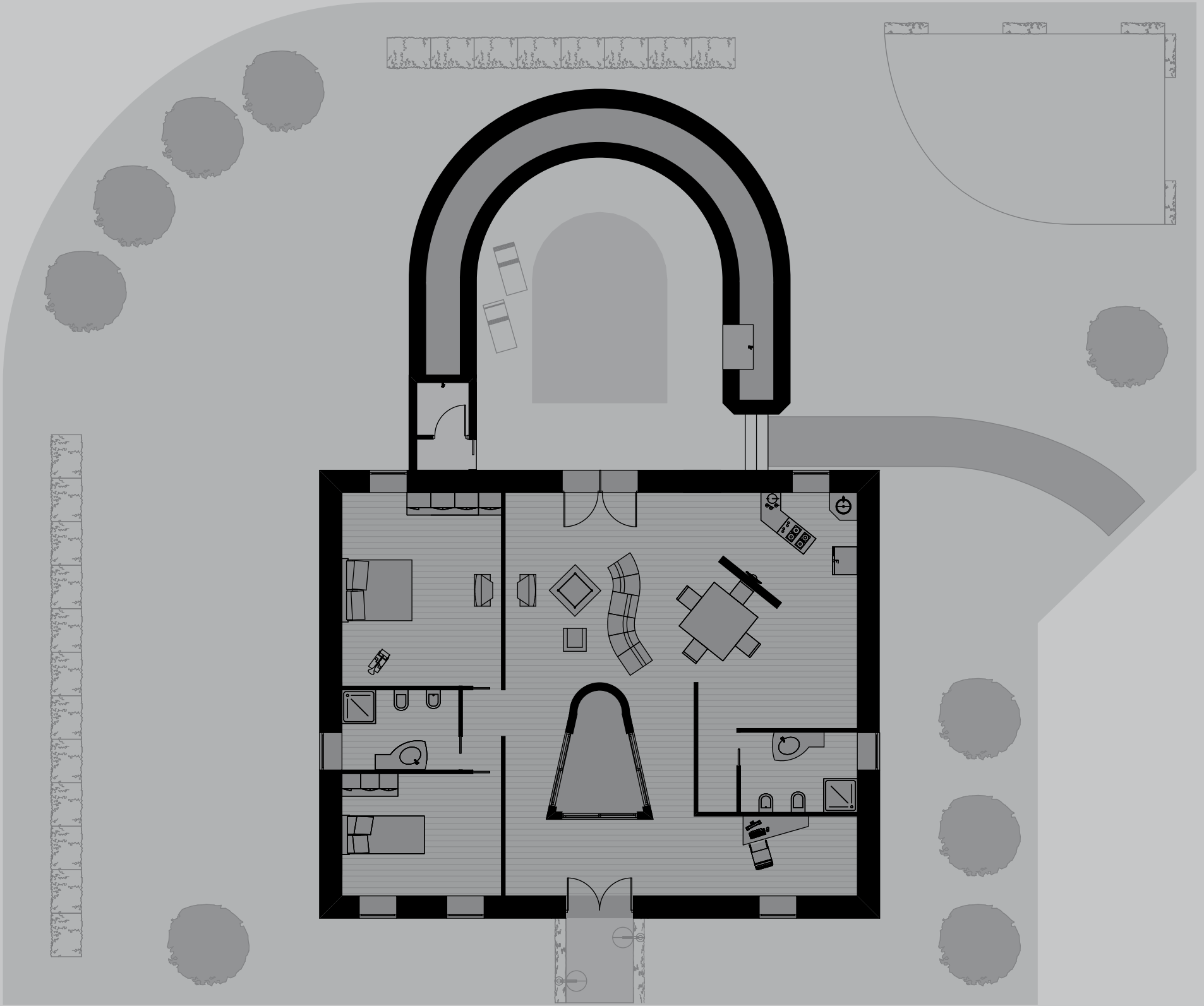
Automation of lights switches on a light, a group of lights or all the lights in the home using just one key;

Management of shutters and automatic devices moves blinds, locks and other motorised devices in a practical and effortless way;

Activation of scenarios creates, with just one movement, the situation required in terms of light, heat and background sound, selecting between different preset "scenarios", such as Relax, Wake Up, Reading and Watching TV;

Sound system creates the musical background required in every room, with free access to a wide range of music.





Safety

My Home makes your home safer and better protected, both while you are at home and when you are out.

My Home prevents intrusions, defends you against domestic dangers and problems such as gas leaks, flooding and electrical black-outs and when necessary takes the necessary countermeasures.

The main functions available:

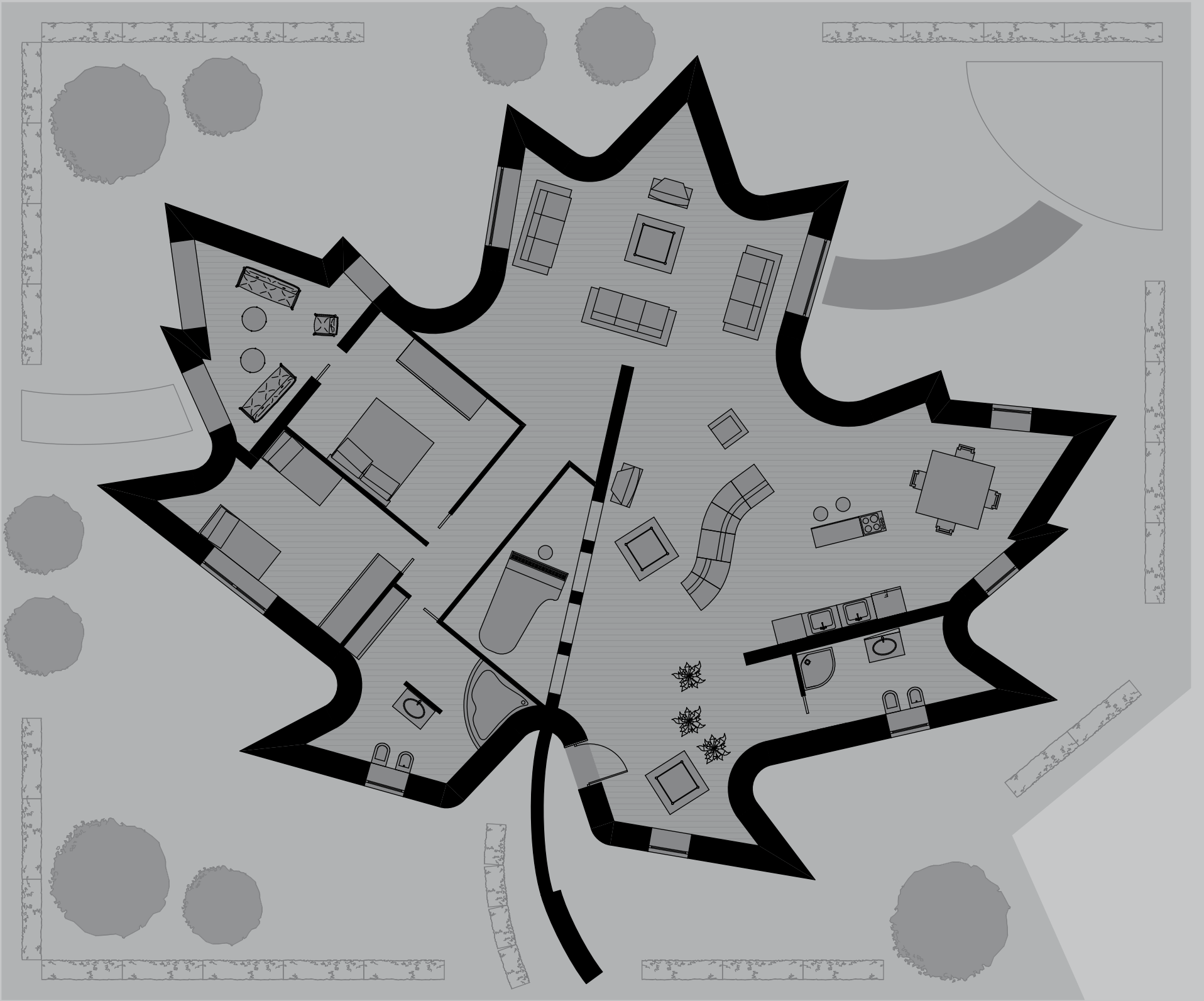
Burglar-alarm protects every room and entrance and gives a warning, if there is an alarm, via telephone, mobile phone, SMS and email;

CCTV checks the rooms of your home locally or remotely, thanks to the display of the pictures from the cameras in the home;

Technical alarms produce rapid information and quickly make the house safe, if there is a flood, gas leak or electrical black-out;

Automatic reset/ Stop&Go Salvavita automatically resets the jump switch which has tripped because of a line surge due to lightning or voltage peaks on the power line.





Energy saving and efficiency

My Home pays great attention to respecting the environment and to the intelligent use of electricity and energy resources. It can constantly display and monitor the consumptions of electricity, gas and water, efficiently controlling the use of electricity and managing the climate control of the home perfectly, changing the temperature in distinct separately managed zones.

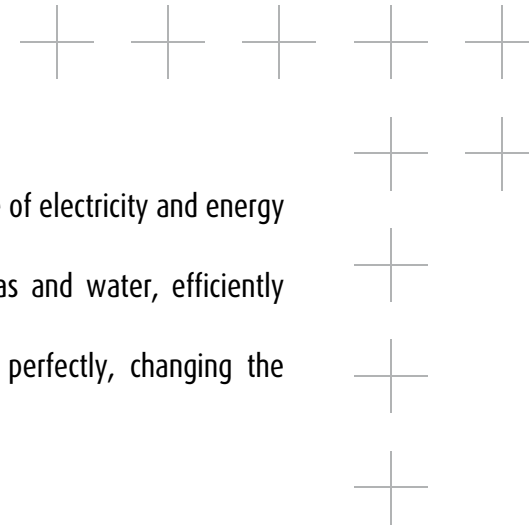
The main functions available:

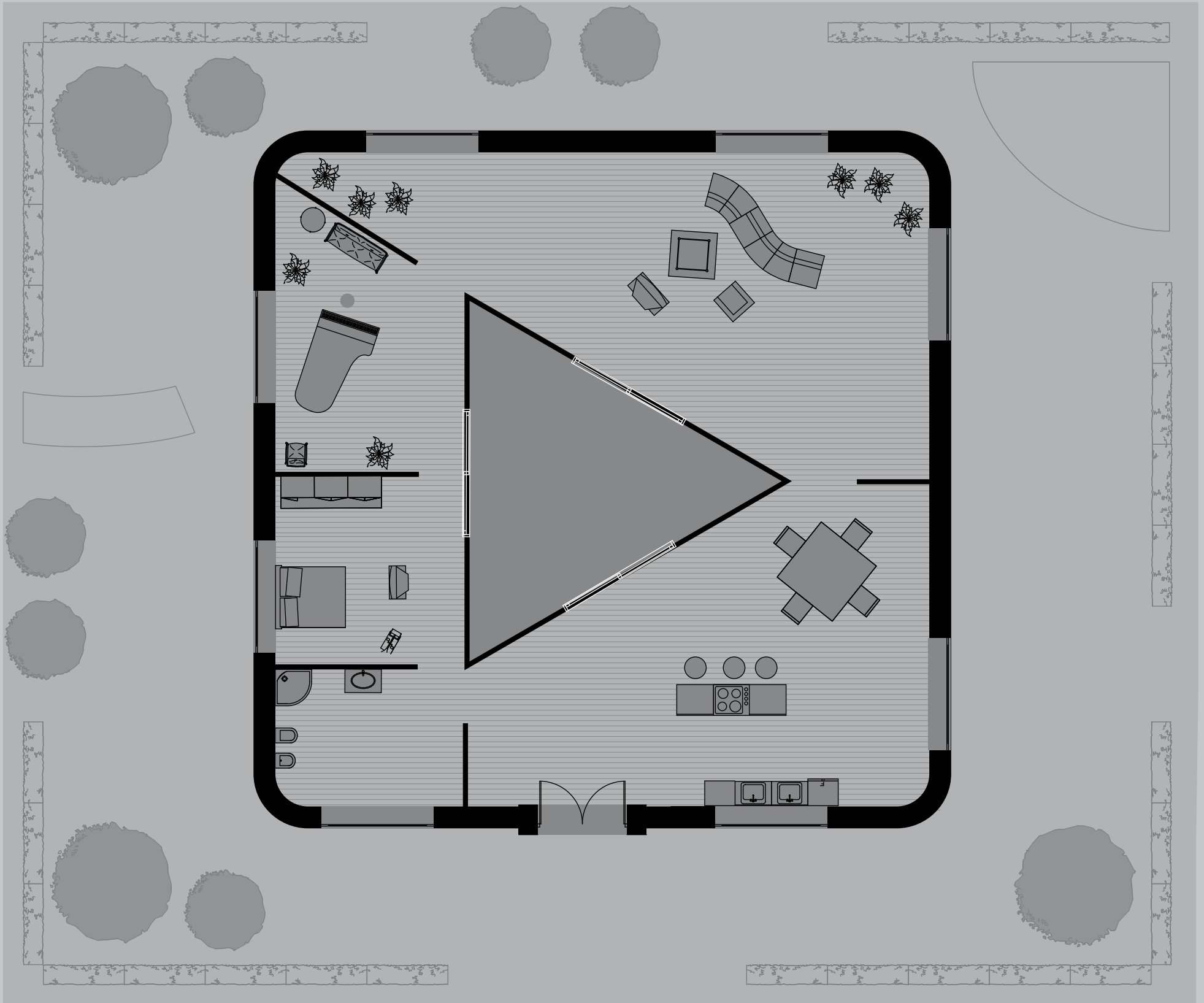
Display of consumptions, the system Touch screens give the customer the instantaneous and cumulated data of the consumptions of electricity, gas and water;

Management of electrical loads monitors the consumptions of the main electrical appliances and avoids the inconvenience of a general black-out caused by excessive consumption of electricity;

Temperature control manages different temperature profiles in every zone of the home, to create the ideal climate, only where and when it is needed;

Air conditioning. The Touch screens also control the air-conditioning system splits.





Multimediality

My Home is at the forefront of technology and can use all the most advanced, effective and intuitive devices to manage your home in the most efficient way: from the various types of Touch screen, to the iPad, from the television screen to the Personal Computer screen.

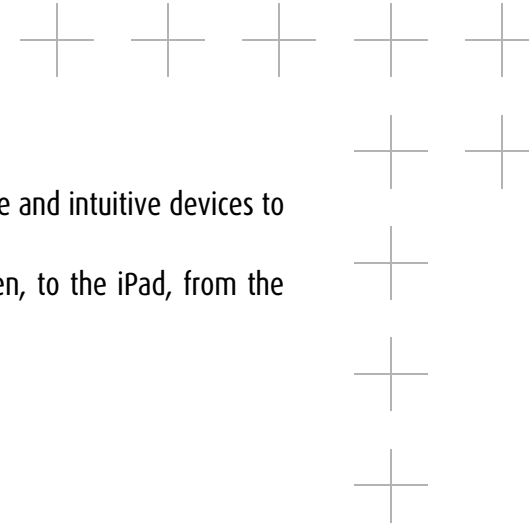
The main functions available:

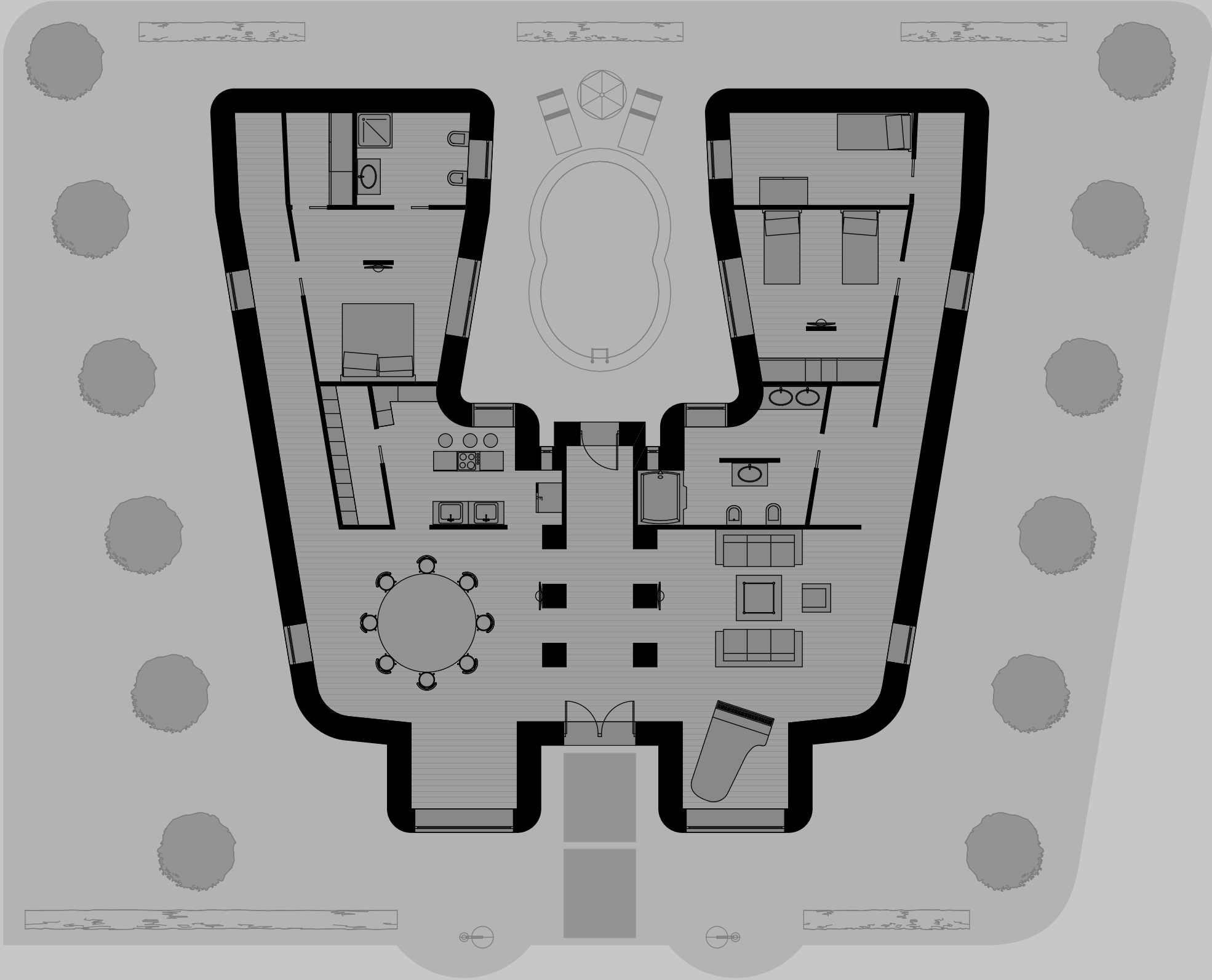
Integration and activations by Touch screen. There are various models of Touch screen, from 1.2 to 10 inches, to support any need for displaying and selecting home automation functions;

Management by iPad. Thanks to our MyHome BTicino software which you can purchase on App Store (where it can also be downloaded in a demo version) your iPad can become a practical portable device to call up preset scenarios and manage home automation functions in the home;

Local management by TV. Using the multimedia interface you can manage the home automation functions by means of a television;

Local management by Personal Computer. You can load small maps or pictures of the home to manage the home automation equipment in your home with your Personal Computer.





Remote control

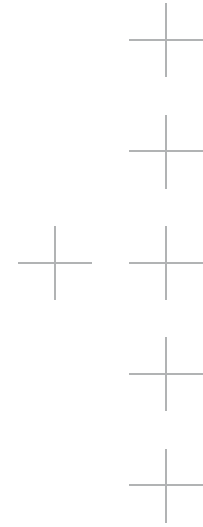
With My Home Web, thanks to the use of an iPhone, Smartphone or PC connected to the Internet, you are always in contact with your home even when you are far away. BTicino has paid maximum attention to guaranteeing high levels of protection of the data in transit on the network against any fraudulent access. The certifications obtained, including ISO27001 "Information technology - Security management systems", are proof.

The main functions available:

Receiving alarm and fault signals. You will always be quickly informed of any problems or emergencies and will be able to activate monitoring actions (e.g. receiving an email with pictures attached of the zone where a burglar alarm has been triggered) or make the house safe (e.g. closing the safety solenoid valve and opening a motorised window for ventilation after a gas leak);

Sending commands, displaying pictures and managing plans. You can send commands to the home, also via SMS, to switch the lights on, operate the shutters, activate scenarios, manage the temperature, display pictures remotely and easily activate plans and programmes which are timed or linked to events;

Check consumptions remotely. Using an iPad or Smartphone connected to the Internet you can also remotely monitor the consumptions of gas, water and gas, calling up cumulative graphs or instant consumption.



2

The applications



MyHome BTicino: scenarios and applications for anyone who wants to see things clearly

BTicino home automation can really create in your home the ideal conditions for living in every room surrounded by maximum well-being, always protected and pampered by a docile and intelligent technology, responsive to every need.

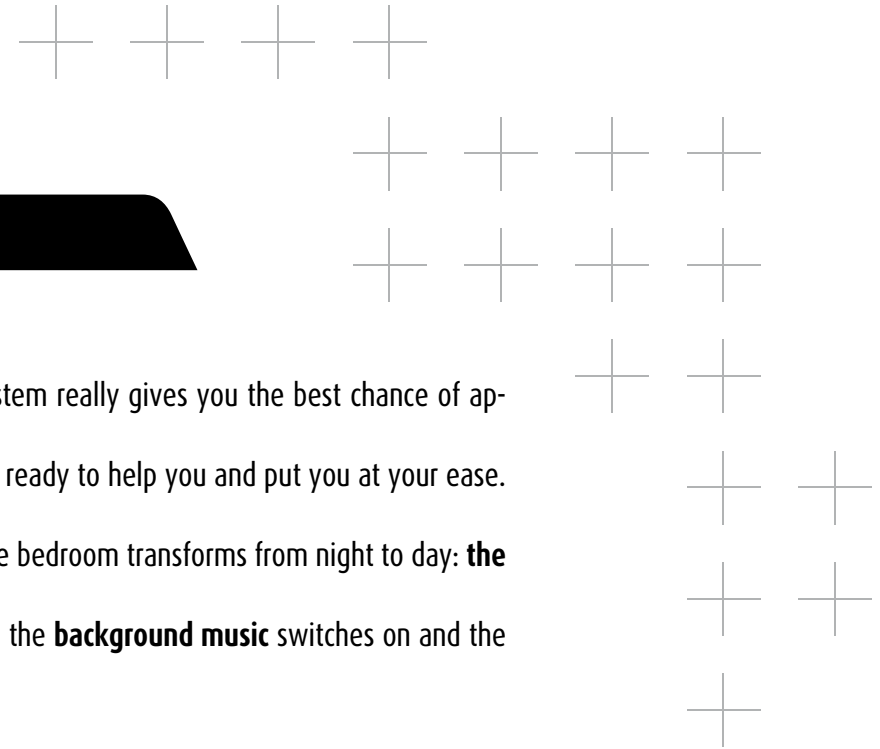
Follow us in a few “moments” which make up part of the everyday life of any family. We will explain how and why My Home makes everything so special.



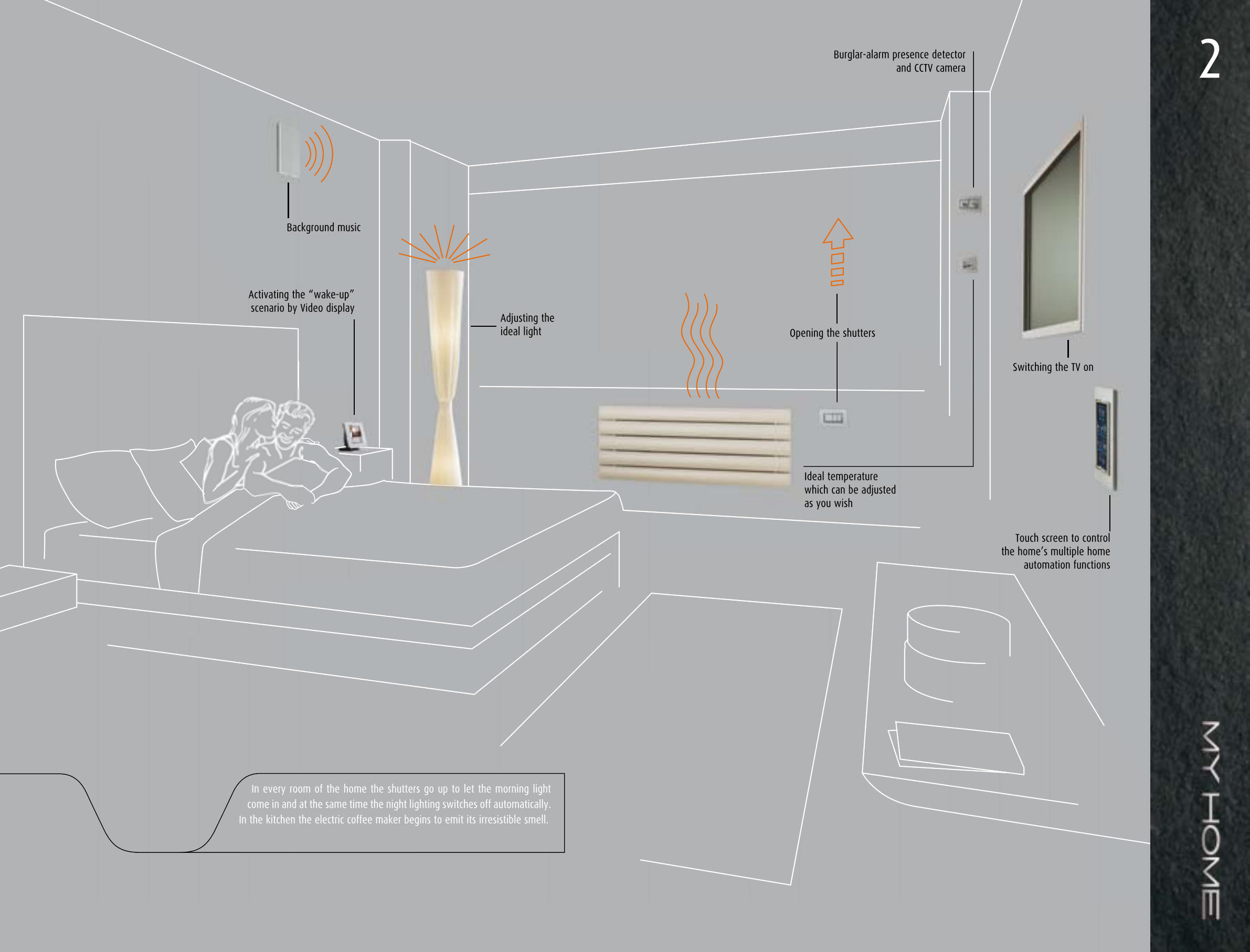
Bedroom: the joy of waking up.

Waking up well is important. Choosing a My Home Automation system really gives you the best chance of appreciating the start of a new day to the full. Everything you need is ready to help you and put you at your ease. Just select the **Scenary touch**'s "Morning" scenario and behold - the bedroom transforms from night to day: **the shutters go up, the brightness** adapts to the first rays of sunshine, the **background music** switches on and the **heat** reaches the right temperature.

In the meantime, with the **Video display** icon menu, you can **change sound source**, to listen to the news on the radio, **raise the temperature** in the bathroom and **start watering** the garden.





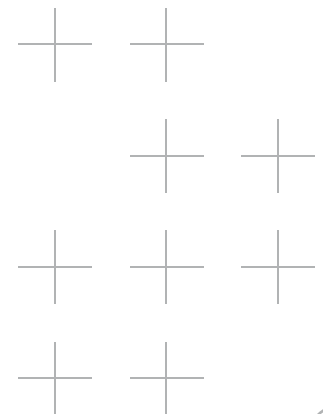


In every room of the home the shutters go up to let the morning light come in and at the same time the night lighting switches off automatically. In the kitchen the electric coffee maker begins to emit its irresistible smell.

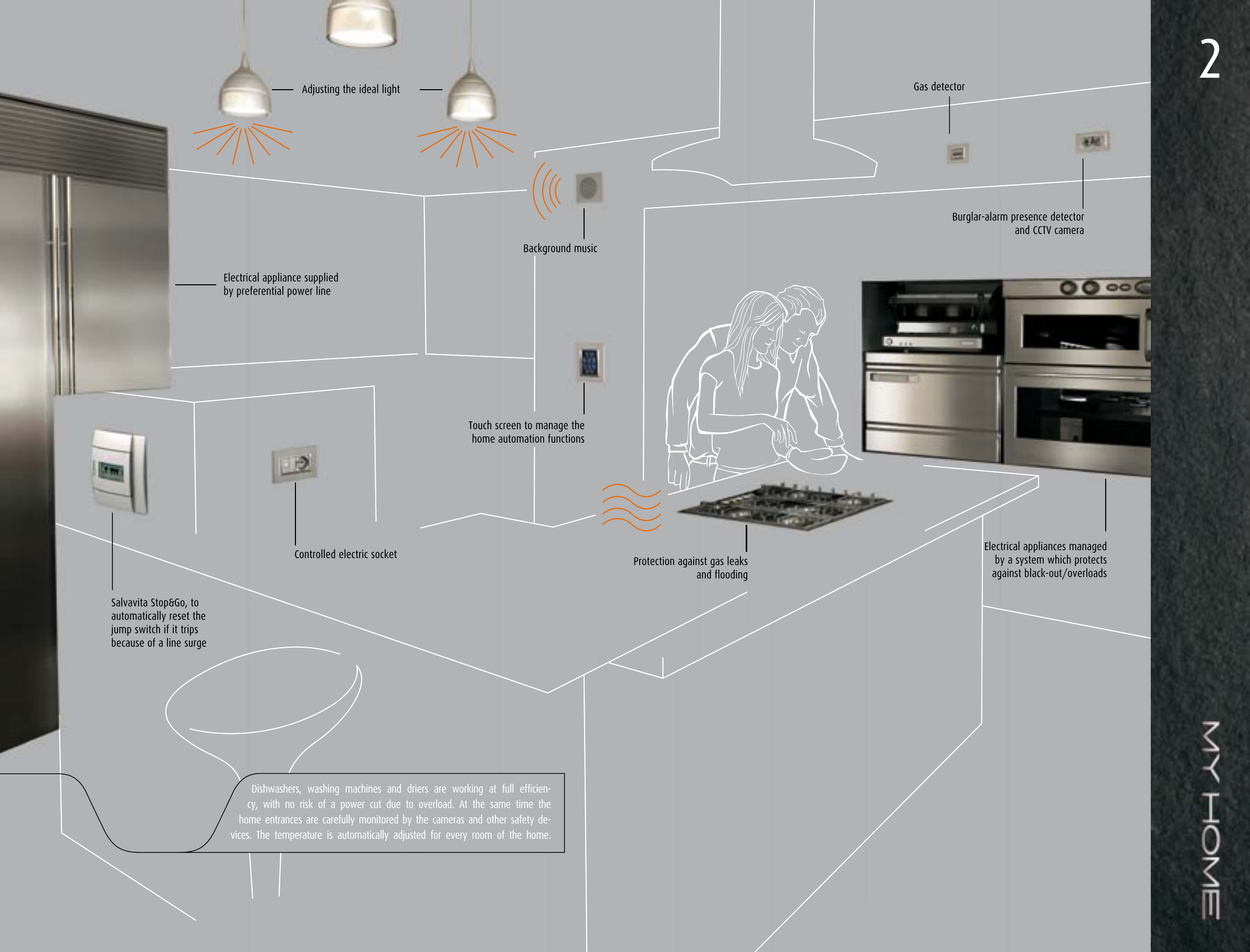
The kitchen: everything is working.

Cooking, washing, ironing and switching the washing machine and dishwasher on: often to save time these are all done at the same moment, with the risk of tripping the power and bringing everything to an abrupt halt. In a home with the My Home system if there is an overload the **Energy Management unit** temporarily disconnects the electrical appliances with lower priority. You can then, using the **Touch screen**, reactivate the electrical appliances which have been disconnected but which you need immediately by pressing just one key. If you want to work to music it is easy to select the musical background of your choice by means of the icons.

Meanwhile the system constantly watches out for **flooding and gas leaks**, both when you are at home and when you are out.







Adjusting the ideal light

Gas detector

Burglar-alarm presence detector and CCTV camera

Background music

Electrical appliance supplied by preferential power line

Touch screen to manage the home automation functions

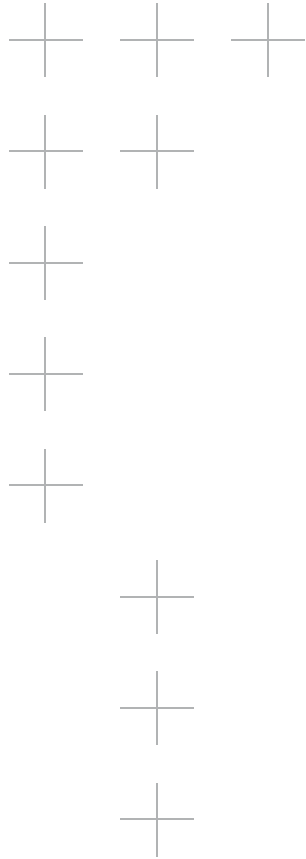
Controlled electric socket

Protection against gas leaks and flooding

Electrical appliances managed by a system which protects against black-out/overloads

Salvavita Stop&Go, to automatically reset the jump switch if it trips because of a line surge

Dishwashers, washing machines and driers are working at full efficiency, with no risk of a power cut due to overload. At the same time the home entrances are carefully monitored by the cameras and other safety devices. The temperature is automatically adjusted for every room of the home.



Living room: the right atmosphere for every occasion.

The My Home system helps you savour every moment, whether you are by yourself or in company. Also, thanks to devices like the **iPad**, using our **MyHome BTicino software** which you can purchase on App Store, you can call up **preset scenarios** and in a moment experience gentle lighting, background music and the ideal temperature. Are friends arriving? With the **Video display** you can recognise them immediately, talk to them, **open the gate** and welcome them by activating a **luminous guided path**. And so that you never lose sight of children playing in their bedroom, just **display the pictures** from the camera in their room on the wide display of the **Multimedia touch screen**.





Video display so that a single device gives you the functionality of a video internal unit and access to home automation functions

Burglar-alarm presence detector and CCTV camera

Background music

Ideal temperature which you can adjust as you please

While in the kitchen the electric oven and other electrical appliances are working flat out, the first guests are at their ease surrounded by warmth. Outside in the garden the watering system is ready for the evening cycle. The evening is beginning.

"My Home BTicino" APP to call the most suitable scenario for the evening's atmosphere

The home's threshold: going out in safety.

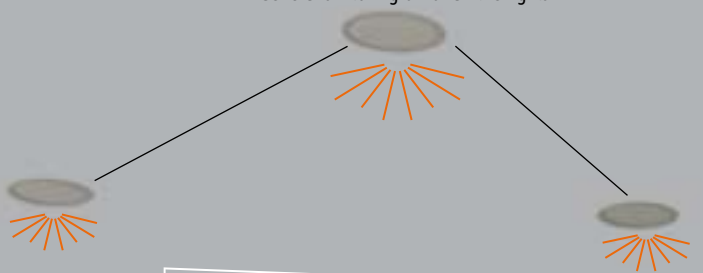
You can leave your home and all your valuables at home without any worries. My Home will protect them. Activating the **burglar alarm** with the practical **electronic key activates protection** for all the rooms of the home, **the lights go out, all the shutters go down and the temperature is set** at a lower level.

Also the **garden will be watered** and then **the home will be ventilated by opening the attic windows slightly and closing them immediately if it starts to rain**. If it is too windy outside, **the outside blinds will wind in immediately** and if the Salvavita main switch trips, My Home **will immediately switch the home's electricity back on**, after checking that the electrical system is in perfect working order.

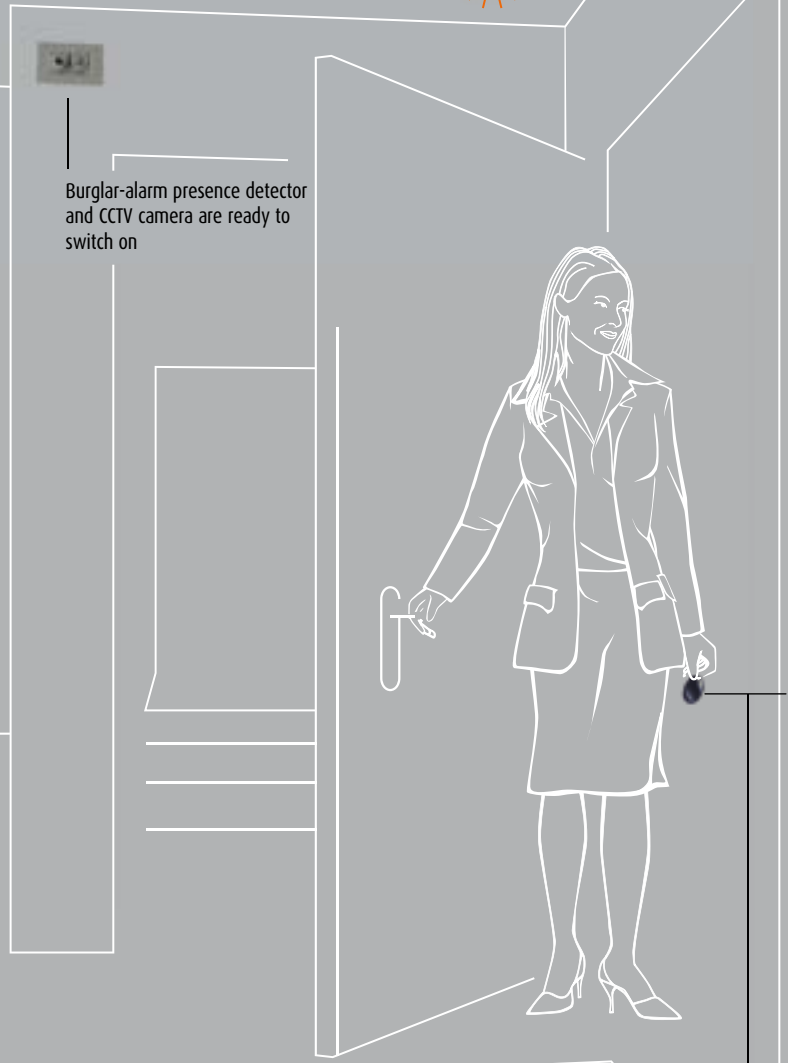




General switching off of all the lights



Burglar-alarm presence detector and CCTV camera are ready to switch on



General closing of all the shutters



Multimedia touch screen to manage all the home automation functions including the CCTV and to give access to many multimedia functions



The temperature is set to a low level



You leave the home "in good hands", just as if you had an efficient housekeeper who will look after everything and never make a mistake

Enabling the burglar alarm and activating of "Away from home" scenario with general switching OFF and activation of all protections

Away from home: peace of mind when on holiday.

Lock up and go away ready to enjoy yourself. With **My Home** this is easily done, in absolute peace of mind. An effective **burglar alarm** will defend your home against the dangers of intrusion and will give the **alarm via telephone, SMS or email** to the people you have left in charge. **Pictures from the zone where the alarm has been given** will be sent via electronic mail. **Cycles of switching on lights or operating shutters or the sound system** can simulate some one being at home for certain periods of the day. And if you are really feeling homesick, you can always log on to the Internet and use the **My Home Web** services to look at the pictures from the **CCTV** cameras in your home.







Look at the camera pictures for a CCTV check of the rooms



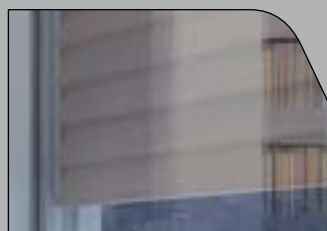
Check the home entrances



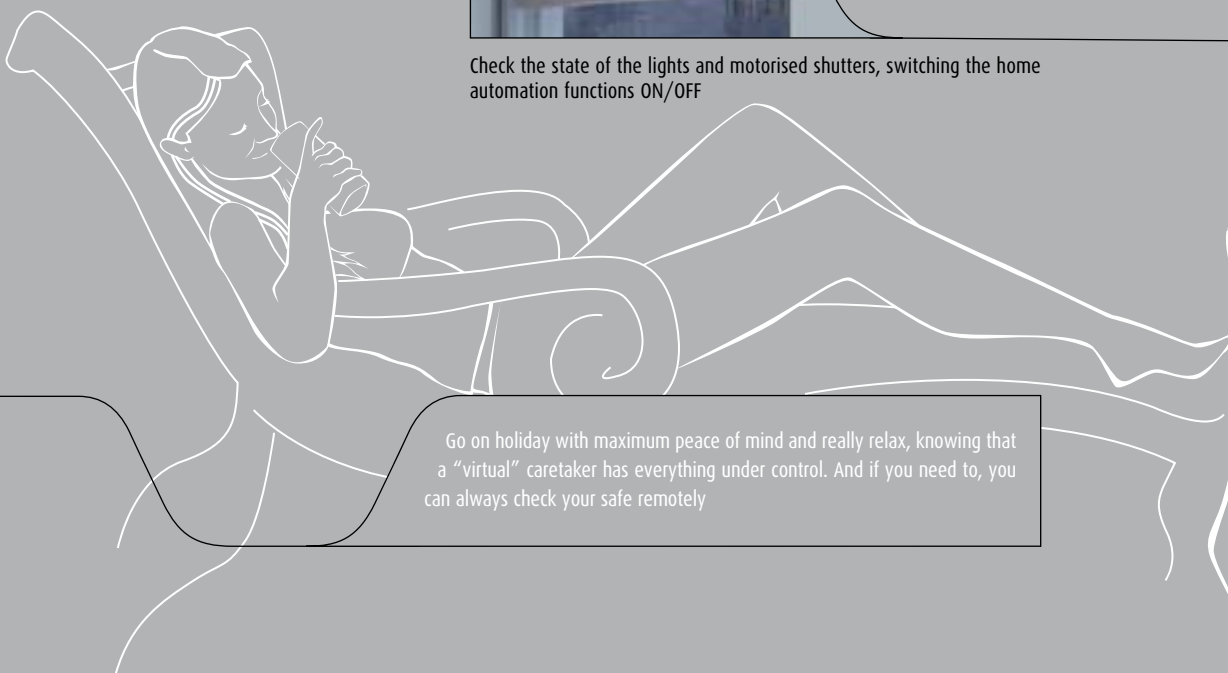
Switch the burglar alarm ON/OFF



Start watering the garden

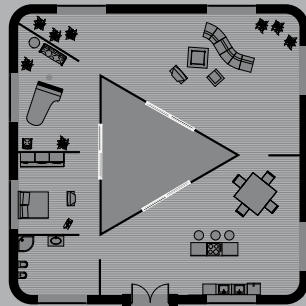
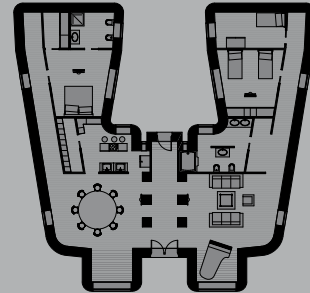
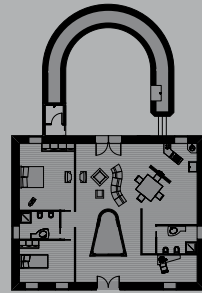


Check the state of the lights and motorised shutters, switching the home automation functions ON/OFF

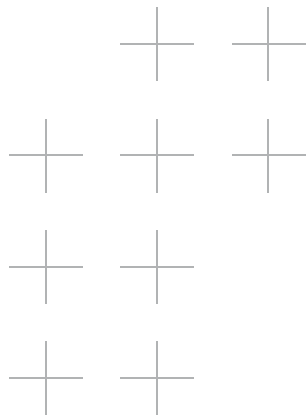


Go on holiday with maximum peace of mind and really relax, knowing that a "virtual" caretaker has everything under control. And if you need to, you can always check your safe remotely





MY HOME
bticino



The My Home system: modular and extensible, to fit your needs.

The BTicino My Home system goes beyond the traditional concept of “electrical system” thought of as a simple installation of light points and electric sockets. Automation, Temperature Control, Sound system, Burglar alarm, CCTV, Distribution of TV and SAT signals, Telephony, Data and remote Management via Internet are functions which are ever more commonly found in the systems of a new-generation home. **BTicino My Home Automation** has been designed to combine all these very useful functions immediately or over time, **according to your timing and budget. BTicino My Home Automation’s** strong point is in fact **its dynamic nature**: ideal both for small changes, such as moving the light switching ON points, which does not require making holes in the wall and for large changes such as adding rooms or changing how they are used.

BTicino My Home Automation is the **right choice now and for the future.**



Home automation tools: solutions which can fulfil every need.

Interacting with the home automation, your home is easy and intuitive, thanks to the vast range of My Home devices: a technological crescendo ranging from the simple immediateness of the digital controls to the gamut of functions which can be called up by the Touch screens in the range. Thanks to the My Home BTicino APP even the iPad can be used to check and manage the home automation system in a practical and enjoyable way.



DIGITAL CONTROLS

The My Home **Controls** give the user complete freedom as to how he uses the various home automation functions. He can in fact select, as preferred, from normal traditional-looking pushbuttons or a vast range of modern touch screens or remote controls.



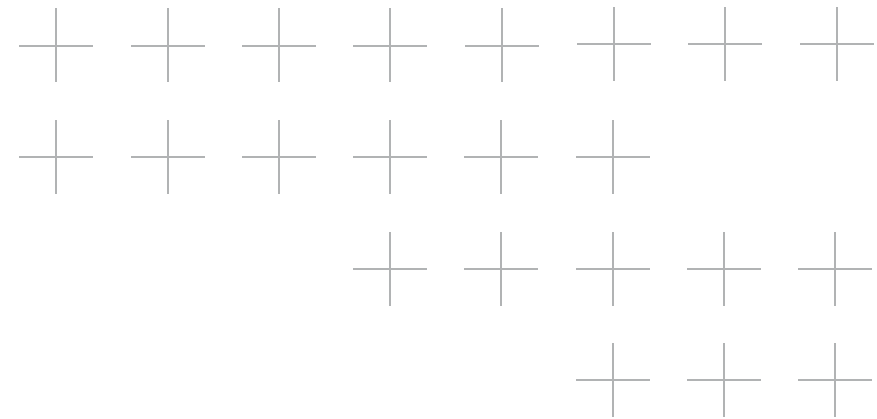
TOUCH SCREEN

My Home **Touch screens** are a well thought-out range of devices which can control multiple home automation functions from the same device, using intuitive icons on the touch screen.



VIDEO DISPLAY

The **Video display** associates the functionalities of the modern colour speaker-phone internal unit and those of an effective device to call scenarios and other home automation solutions in just one device.



MULTIMEDIA TOUCH SCREEN

The **Multimedia touch screen** is the most advanced home automation device and can manage all the home automation functions, such as the automation of shutters and the control of lights, video internal unit and CCTV, management of the temperature control, burglar alarm and sound systems and still others. Many multimedia functions are available, such as using pictures or audio tracks via USB port or RSS services on LAN network and via Internet such as news, weather forecasts, webcams and web radio.



"MY HOME BTICINO" APP FOR IPAD

Thanks to our specially developed "MyHome BTicino" APP you can call up and manage many home automation functions in the home, by means of intuitive icons. This APP can be purchased on APP STORE and it is also available in the Free version which can be downloaded free for demonstration purposes.



Energy efficiency, display and monitoring of consumptions.

The mission of BTicino My Home Automation is to produce a home environment where you can live in the greatest comfort, using only the energy and heat you need. To this end, BTicino proposes a wide range of Energy-efficiency solutions which are aimed at achieving the following specific objectives:

Heating only when and where it is needed.

Use of zone temperature control, to select the temperature of every room or environment, avoiding waste and optimising consumption.

See to improve.

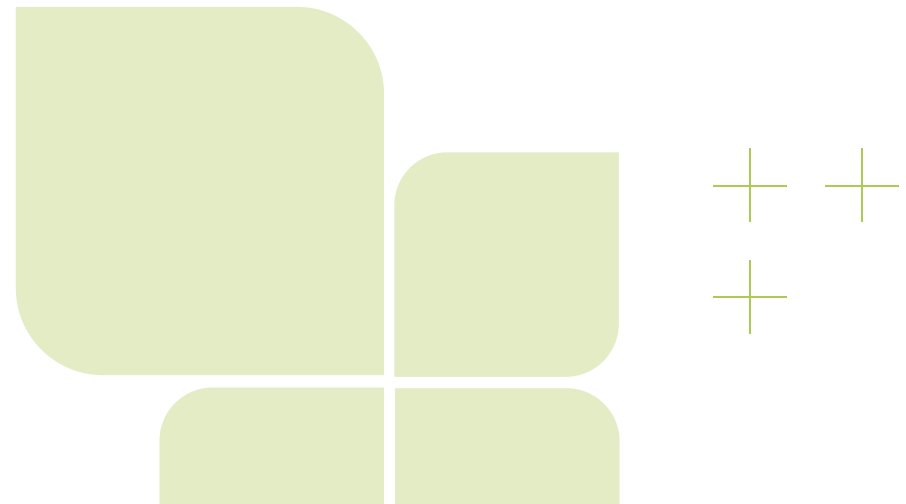
From the Touch screen the user can easily display the consumptions of his home (electricity, water and gas), to decide whether to change his own wasteful habits or take action if there are anomalies.

No more black-outs.

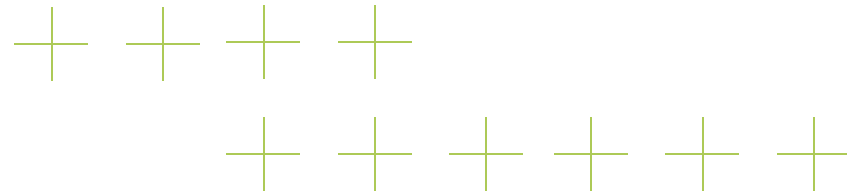
This function lets you manage the maximum power used and disconnect the less important electrical appliances, if there is an overload. From the Touch screen the user can check the total consumption of the single lines checked and decide to modify the priorities rather than setting timings in switching the loads on (also to take advantage of the price tariff).



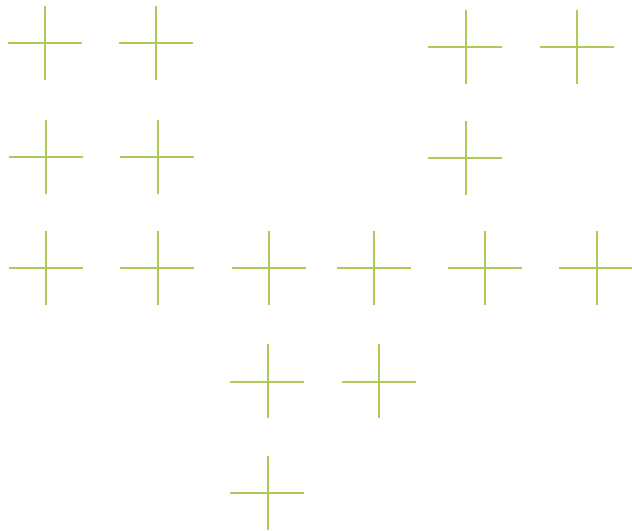
The Load Control Management system includes a troubleshooting function, so that the user can immediately look at problems on the earths of the electrical appliances being checked.



See to improve.



From the Touch screen the user can easily display the consumptions of his home (electricity, water and gas), to decide whether to change his own wasteful habits or take actions if there are anomalies. The aware user is a user who saves money and protects the environment.



Intuitive icons help you use the Touch screen to select the consumptions to be checked.



You can use the Multimedia touch screen as well to display the consumptions to be monitored over time, through the use of daily or monthly graphs or graphs for the last twelve months as well. Special energy meters and impulse-count interfaces let you establish how much energy is produced and how much water is heated if the home has a photovoltaic system or a solar heating system.

3

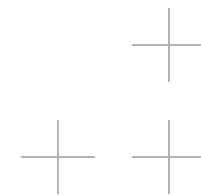
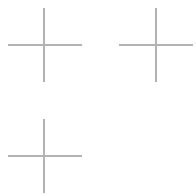
The lines



Axolute, Livinglight and Matic.

The value of elegance and technology.

For more than 50 years BTicino has been a global leading company in technical innovation and design applied to the products it offers. Its history is that of quality and continuous research, which today finds its maximum expression in the advanced solutions of My Home Automation, a system which is not only the application of technology but also freedom of aesthetic choice so that the devices of the electrical system best fit in with the home's furnishing style. In this sense BTicino, with Axolute, Livinglight and Matic, offers three different ways of "dressing" My Home Automation - three lines which are different in appearance, each with its own unmistakable personality, but united by a common denominator: **the value of elegance and technology.**

**AXOLUTE****LIVINGLIGHT****MATIC**

The maximum value of technological slimness.

Square, pared-down in design and monochrome: Eternis is the new exclusive and extra slim Axolute clothing. It is distinguished by its homogeneity of colour and its imperceptibly slim light point: only 2.5 millimetres of absolute perfection.



White



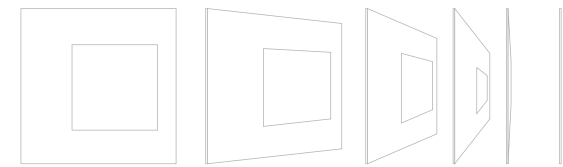
Anthracite



Tech



Sound-system and temperature regulation controls
Tech



Touch screen
Tech

Absolute white.

My Home BTicino's highly refined and elegant solution for making a home automation system where each light point is completely white, in line with the most sophisticated trends.



Soft Touch control
Corian® glacier glass



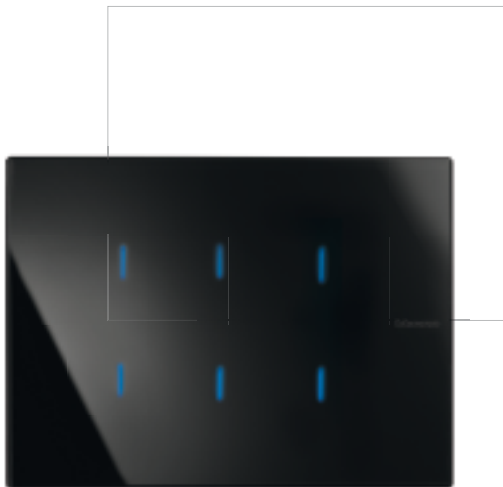
Temperature-control unit
Axolute white



Video display
Axolute white

Black in all its elegance.

Essential, refined and seductive. The Axolute Nighter black glass monochrome line represents excellence in the creation of a design which is as simple as it is elegant, capable of opening a new frontier in the living style of the uncompromising.



Glass digital controls
Axolute Nighter



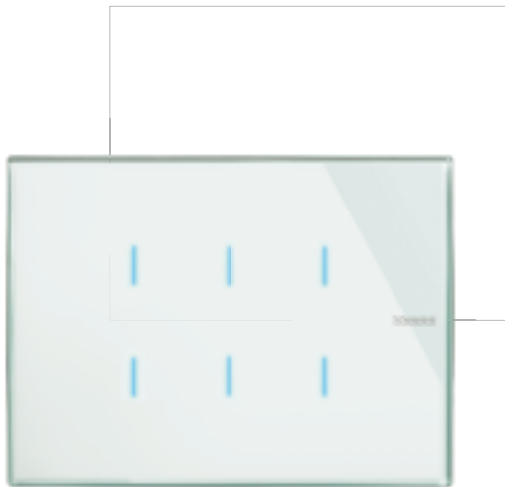
Light control and Local display for sound system
Axolute Nighter



Video station
Axolute Nighter

White as refined stylistic choice.

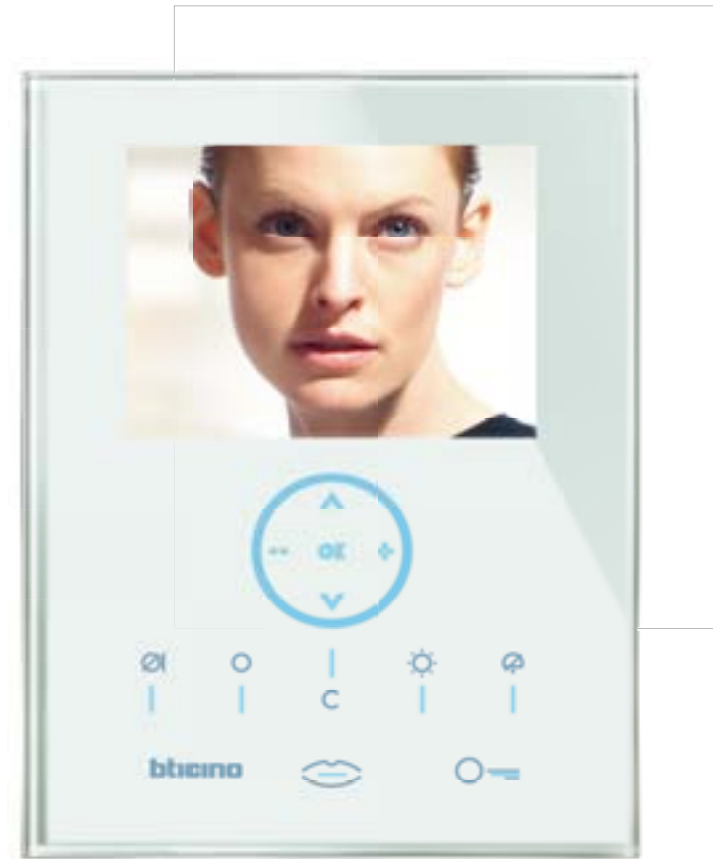
The Axolute White line, monochrome in iced white glass, is a real experience which captivates all the senses. This maximum expression of a perfect mix between design and technology transforms the home into an exclusive place to live, feel, see and touch.



Glass digital controls
Axolute White



Light control and Local display for sound system
Axolute White



Video station
Axolute White



Expression of excellence and innovation.

The Axolute line offers a vast selection of high-quality materials and finishes, with the best performance of the most recent digital technologies. Axolute offers a range of ideal solutions for a variety of needs, tastes and desires, from the point of view of both design and materials. From square to convex, from metals to glass, each solution has its own distinctive style.



Scenario touch and controls
Kristall glass



Touch screen
Kristall glass



Video display
Kristall glass



Scenary touch and burglar-alarm connector
Anthracite



Touch screen
Anthracite



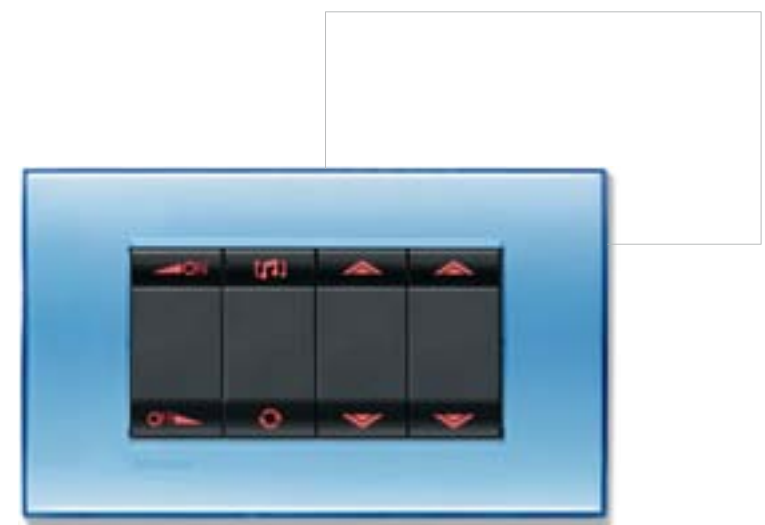
Video display
Anthracite

One name, an infinity of solutions.

Livinglight is our new proposal born to satisfy all tastes, thanks to its maximum freedom in combining the keys and shapes you want. Three finishes of key: white, tech and anthracite; three designs of cover plate: AIR, round and square. Everything is perfectly interchangeable, to brighten up your life and passions.



Sound-system and automation controls
Tech



Sound-system and automation controls
Light blue



Surprisingly thin, incredibly rich.

Design and technology meet in the perfect shape of Livinglight Air, which is less than 5 mm thick and has a refined selection of finishes, decors and materials.

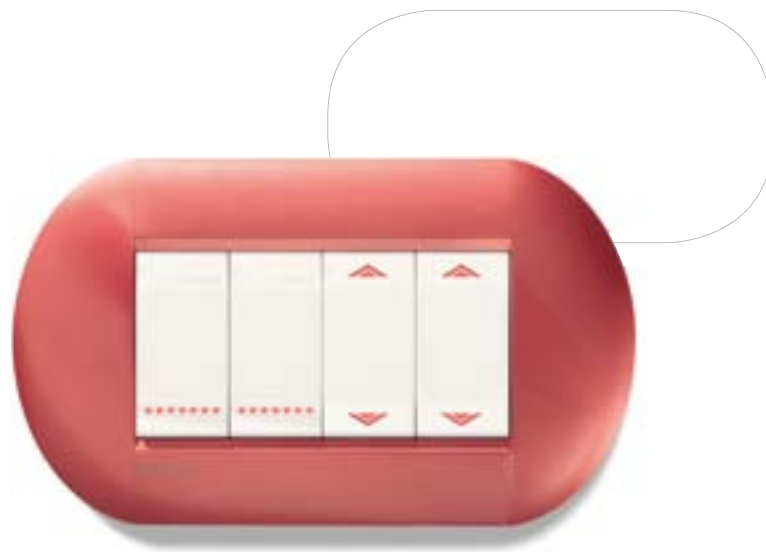


Digital controls
Net



Decisive and personal style, with round cover plates.

The range of round cover plates means you can always find the most suitable combination for your needs to fit in with the furnishing components chosen, thanks to innovative colour solutions and choice of finishings and materials.



Light and automation controls
Sunset



Video display
Sunset

Classic and discreet style, with square cover plates.

The range of square cover plates aims at a refined and non-invasive style, ideal for fitting into the wall thanks to a vast range of neutral, natural or delicately bright shades.



Sound-system and automation controls
Brushed steel



Touch screen
Brushed steel

Simple, coloured and modern.

Recently brought up to date, the Màtix line is the perfect expression of style and the vanguard. As well as the design, the range of colours available has also been completely reviewed and extended to match perfectly with trends in contemporary furnishing.



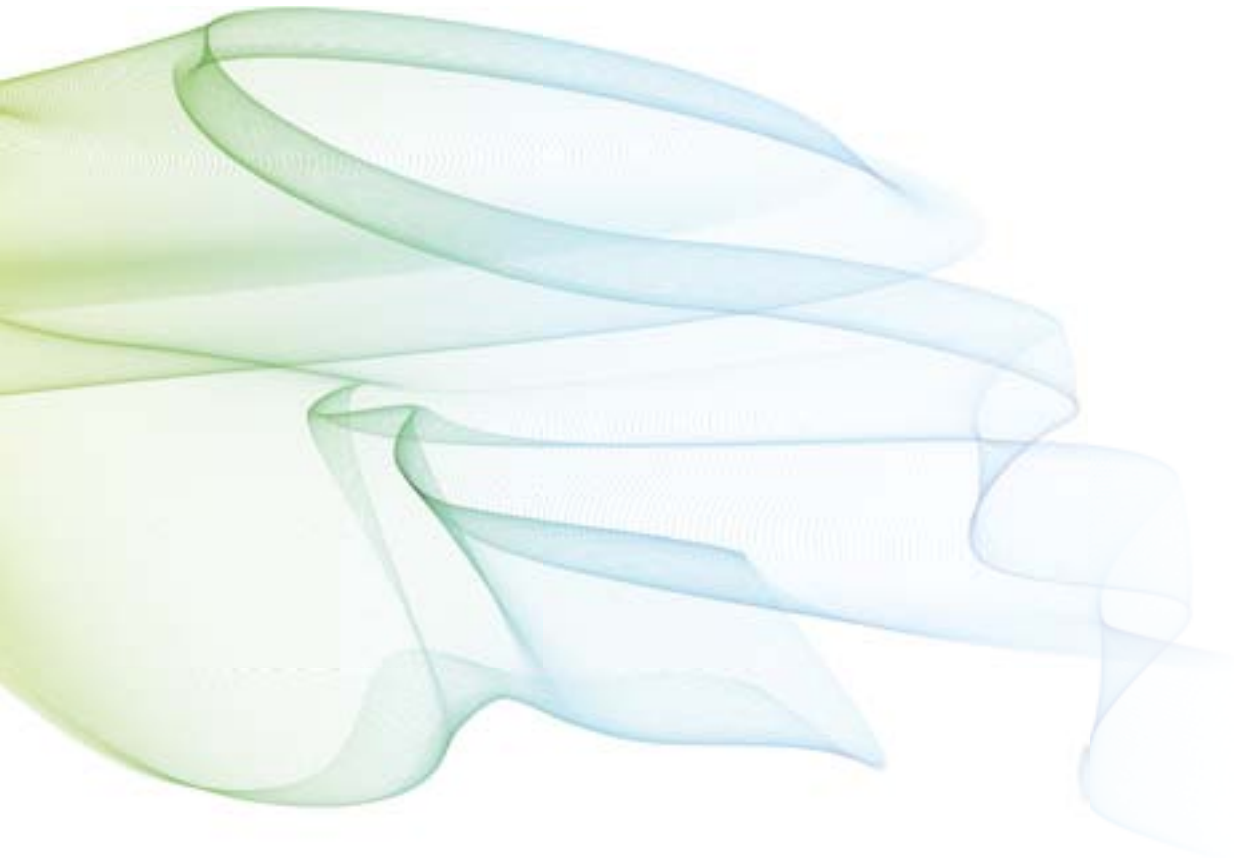
Light and automation controls
White



Sound-system controls
White



Automation control and burglar-alarm connector
White



Temperature-control unit
White



Main ON-OFF control and presence detector
White

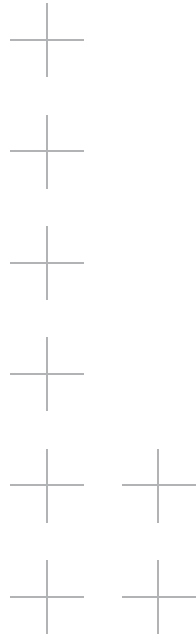


Touch screen
White

4

The contacts





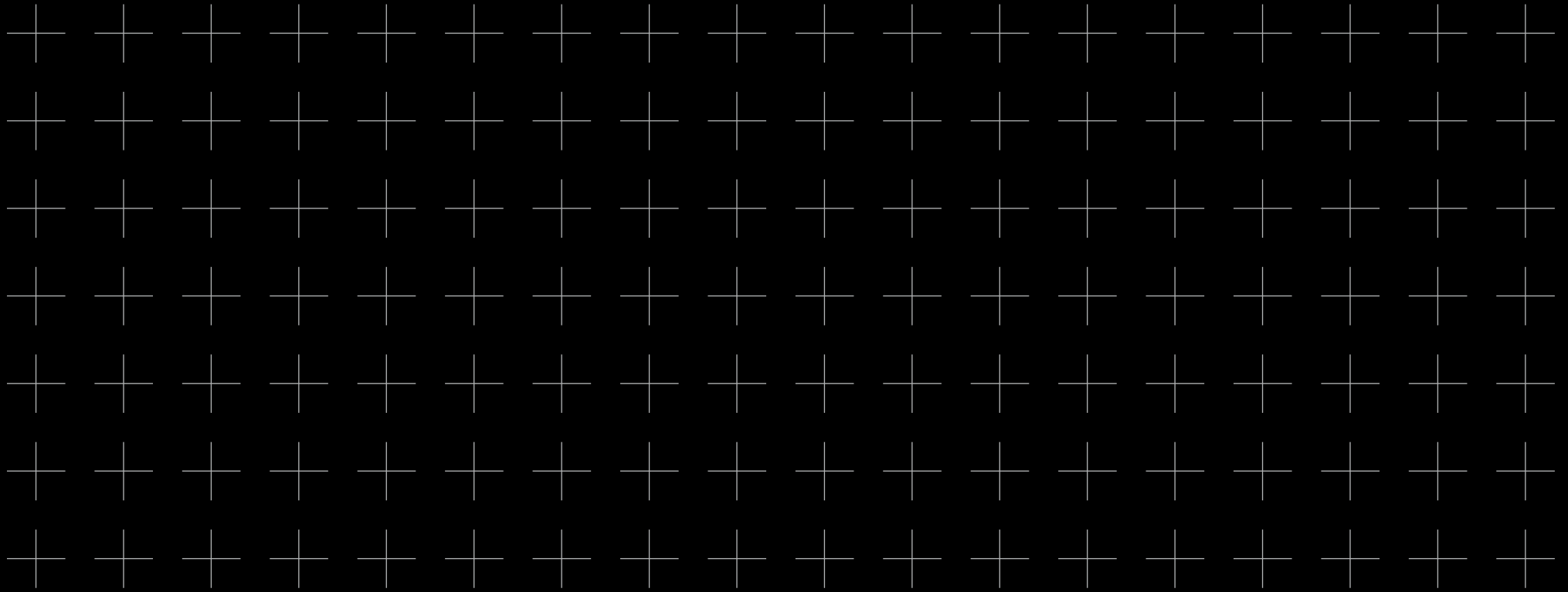
How to get in touch with BTicino My Home Automation.

BTicino has a strong, widespread network of specialised installers who work throughout Italy supplying you with their qualified consultancy to listen to your needs, make site inspections, give customised estimates and help you make the home of your dreams. These professionals will also be pleased to help you if you want to update and develop your My Home system later. As a further reassurance it is important to know that in Italy BTicino has a widespread network of Technical After-Sales Service Centers, ready to act quickly if required.

If you require any information you can count on our efficient Call Center service, which can give you more detail about My Home and BTicino Home automation. Ask for **our product brochures** or for a first contact with the most qualified installers. We will be ready to answer you, to satisfy all your needs immediately.

www.bticino.com

Free phone number
800.837035



Thanks to:

Foscarini Srl

Moroso SpA

Oluce Srl

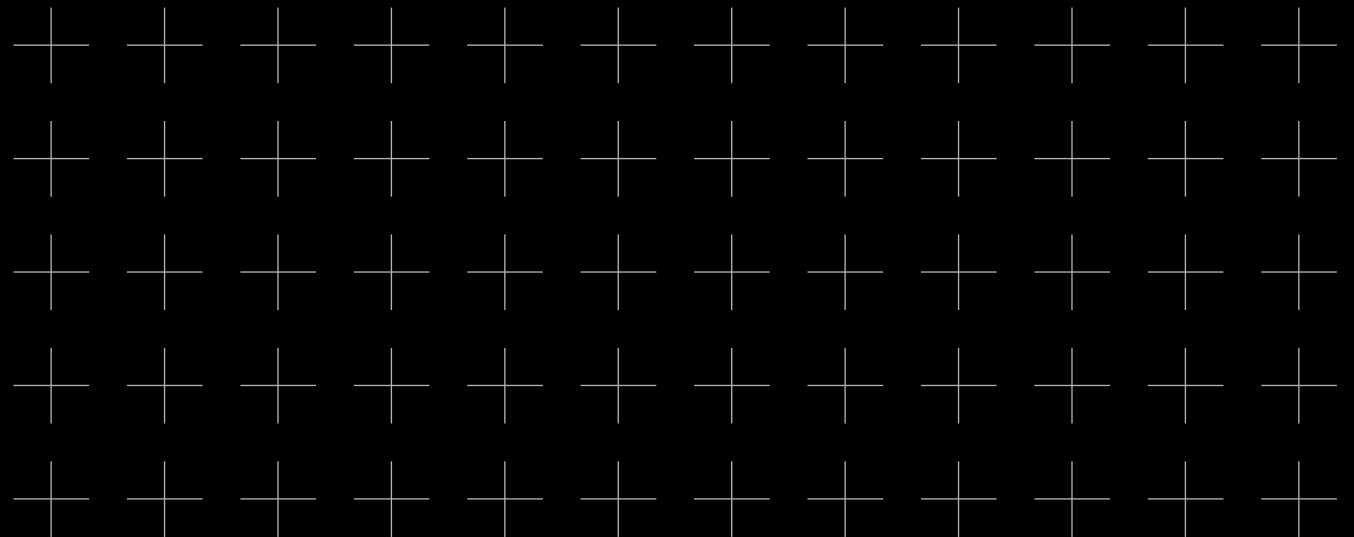
Agency: Publicis Dialog

Preprinting: A. DePedrini

Printing: Litopat

BTicino Product Design Zecca&Zecca

BTicino SpA - 2012



bticino



www.bticino.com